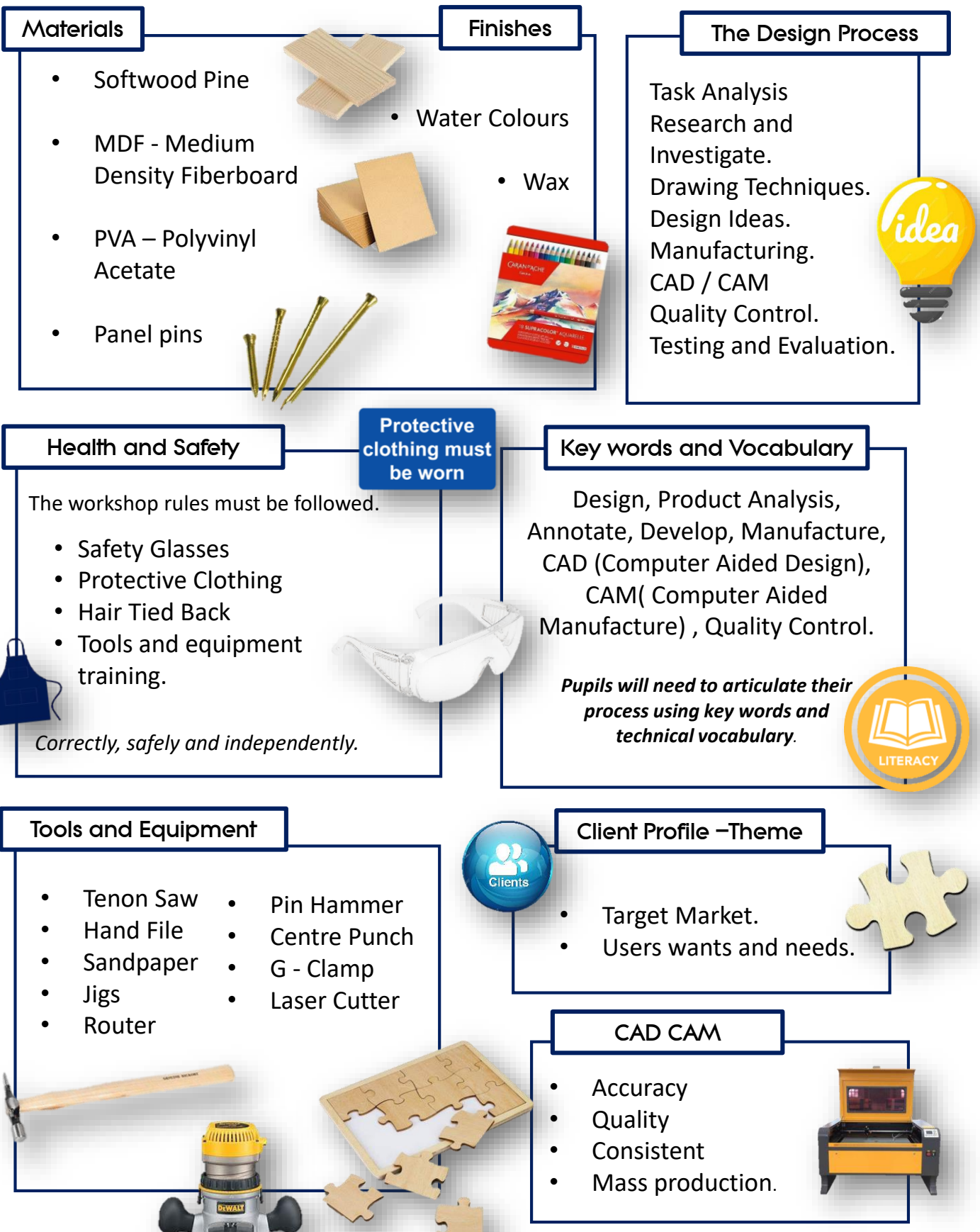


D&T - Resistant Materials



Materials

- Softwood Pine
- MDF - Medium Density Fiberboard
- PVA – Polyvinyl Acetate
- Panel pins



Finishes

- Water Colours
- Wax



The Design Process

- Task Analysis
- Research and Investigate.
- Drawing Techniques.
- Design Ideas.
- Manufacturing.
- CAD / CAM
- Quality Control.
- Testing and Evaluation.



Health and Safety

The workshop rules must be followed.

- Safety Glasses
- Protective Clothing
- Hair Tied Back
- Tools and equipment training.



Protective clothing must be worn



Correctly, safely and independently.

Key words and Vocabulary

Design, Product Analysis, Annotate, Develop, Manufacture, CAD (Computer Aided Design), CAM(Computer Aided Manufacture) , Quality Control.

Pupils will need to articulate their process using key words and technical vocabulary.



Tools and Equipment

- Tenon Saw
- Hand File
- Sandpaper
- Jigs
- Router
- Pin Hammer
- Centre Punch
- G - Clamp
- Laser Cutter



Client Profile -Theme



- Target Market.
- Users wants and needs.



CAD CAM

- Accuracy
- Quality
- Consistent
- Mass production.

