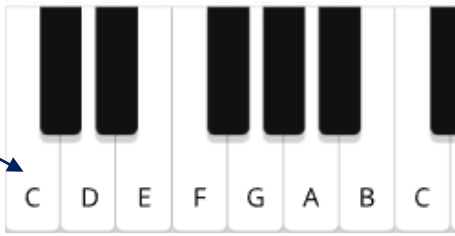


# Music – Keyboard and Pitch



## Keyboard skills and Pitch Notation

C is to the left of the two black keys....

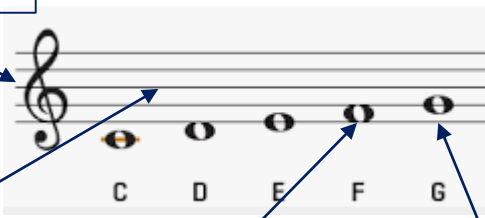


Treble clef

Staff / Stave

Space note

Line note



## Key words and Vocabulary

- **Pitch** – How high or low the notes are
- **Treble clef** – The sign at the start of the music, means the notes are mostly mid range pitch or higher
- **Time signature** – the numbers at the start of the music, tells us how many beats are in a bar
- **Bar**- a measure of music, normally 3 or 4 beats
- **Barline** – separates each bar
- **Notation** – the way we write music
- **Staff/Staff** – the lines and spaces where the notes live
- **Line note** – a note where the line goes through the middle
- **Space note** – a note that lives in the space between two lines
- **Octave** – the distance between 2 notes of the same name eg low C to higher C – 8 notes

## Keyboard Navigation

Power supply and headphones

Power on/off

Volume

Display

Keys

Middle C (to the left of the two black keys)

